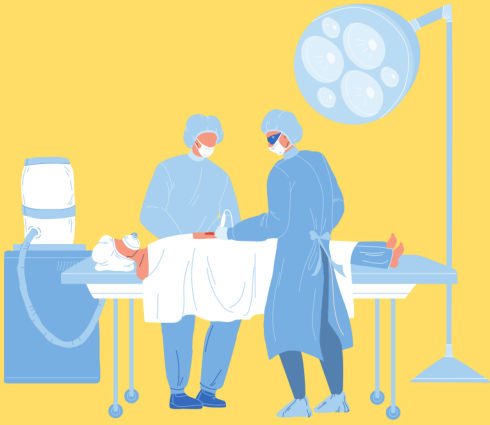


Important Decisions Before Surgery

UW Medicine



Part of planning for surgery includes thinking about the unexpected.

Planning for the 'What ifs'

What if my recovery takes longer than I planned?

What if I need more help after surgery than I currently have?

What if I need help making medical decisions?

The best time to plan is before surgery.

Your care team includes a Social Worker who can help talk about the 'What Ifs.'

Call today ph: 206-744-0315

